



## Southend Road

Howe Green, Chelmsford, CM2 7TE

**GUIDE PRICE** £450,000 - £475,000

- Approximately Third of an Acre Plot
- Easy Access Route to London
- Village Setting
- Detached Bungalow
- Free Flowing Layout
- Off Street Parking for Multiple Vehicles

# Southend Road, Howe Green, Chelmsford

**\*\*VILLAGE LOCATION AND APPROX. THIRD OF AN ACRE\*\***

This Three bedroom detached bungalow is set well positioned in the ever popular village of Howe Green. The bungalow offers a lot of living accommodation as well as it being very free flowing to allow for the modern way of living and spending much time in the lounge, dining room and kitchen. The whole plot occupies an approximate third of an acre and could really be enjoyed in particular through those long summer afternoon and evenings.

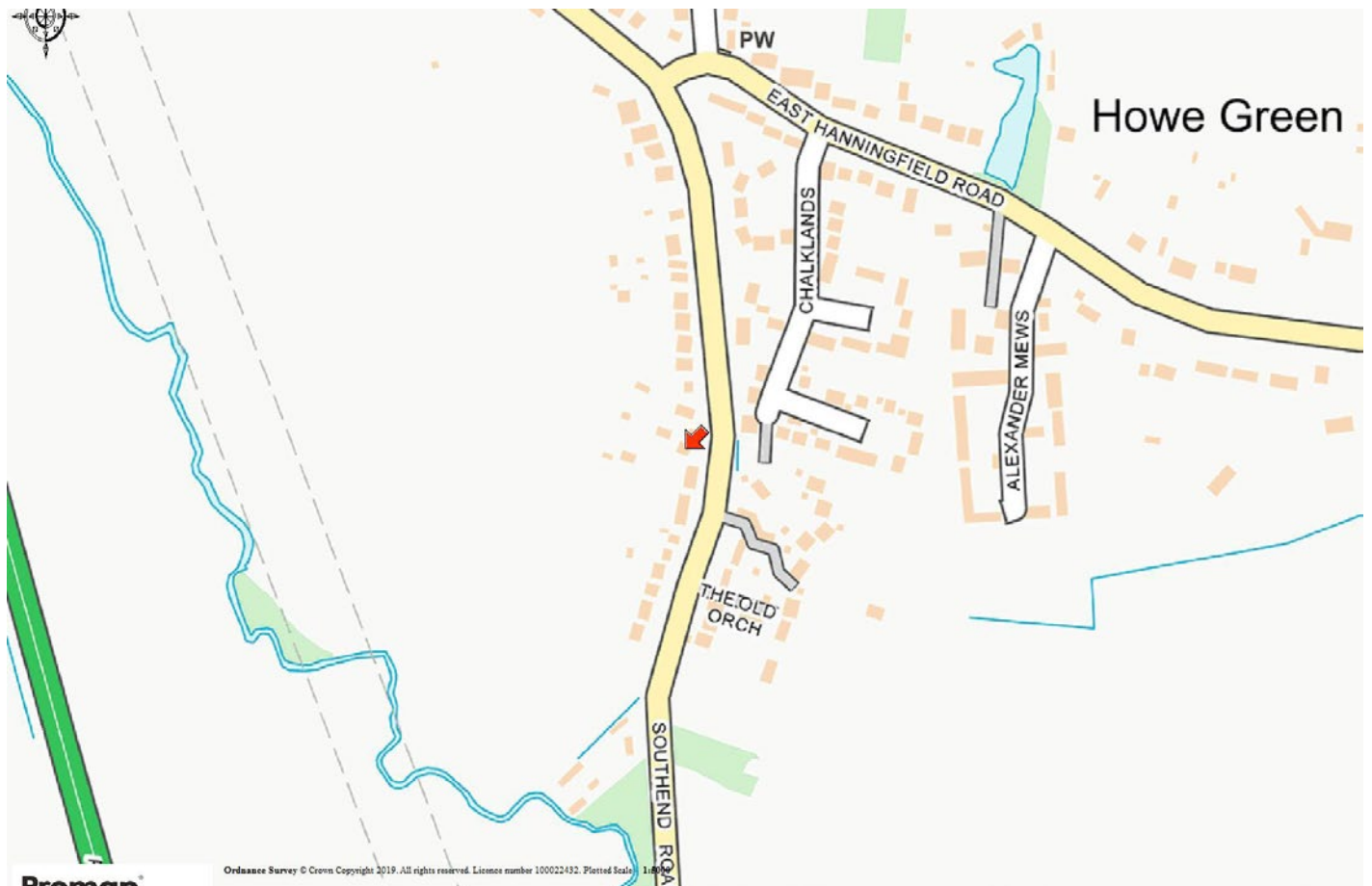
## Location

Howe Green is a popular rural village on the outskirts of Chelmsford. With its divine location being set within a close proximity to the A130 offering easy access to Chelmsford,

Southend and London. There is also the A12 into Colchester and beyond on your doorstep.

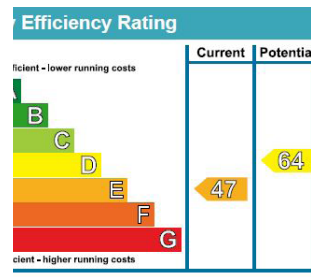
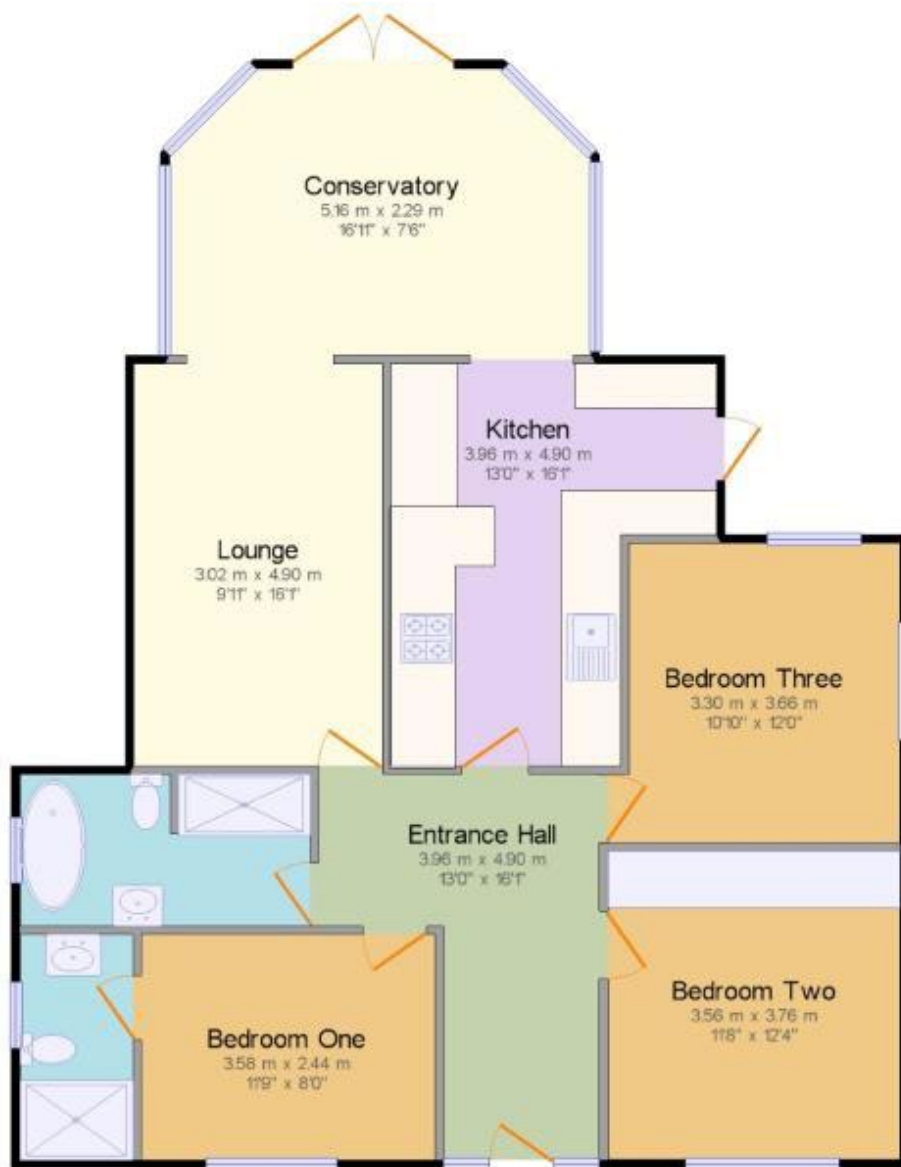
## Accommodation

- Entrance Hall - 3.96m x 4.9m
- Lounge - 4.88m x 3.02m
- Kitchen - 4.89m x 4.18 > 2.72m
- Dining Room - 5.18m x 2.87m
- Bedroom One - 3.58m x 2.44m
- En-Suite
- Bedroom Two - 3.56m x 3.76m
- Bedroom Three - 3.3m x 3.66m
- Bathroom - 3.48m x 2.08m









## Property Information

**Local Authority** Chelmsford City Council

**Council Tax** D

**Viewing** Only by appointment with Kemsley Residential

Tel: 01245 358800

**Disclaimer** Kemsley LLP for themselves and for vendors or lessees of this property whose agents they are give notice that (i) the particulars are produced in good faith, are set out as a general guide only and do not constitute any part of the contract (ii) no person in the employment of Kemsley LLP has any authority to make or give representation or warranty in relation to this property. Kemsley LLP is a limited liability partnership registered in England with registered number OC326192. All references to 'Kemsley' or 'the firm' should read as referring to Kemsley LLP from 1 October 2007.

**Opening Hours** Mon: 09.00am - 17.30pm • Tues: 09.00am - 17.30pm • Wed: 09.00am - 17.30pm • Thu: 09.00am - 17.30pm • Fri: 09.00am - 17.30pm • Sat: 09.00am - 15.00pm



Kemsley LLP  
113 New London Road  
Chelmsford  
Essex CM2 0QT

**Tel** 01245 358800  
**Fax** 01245 356758  
**Email** residential@kemsley.com  
**Web** www.kemsley.com