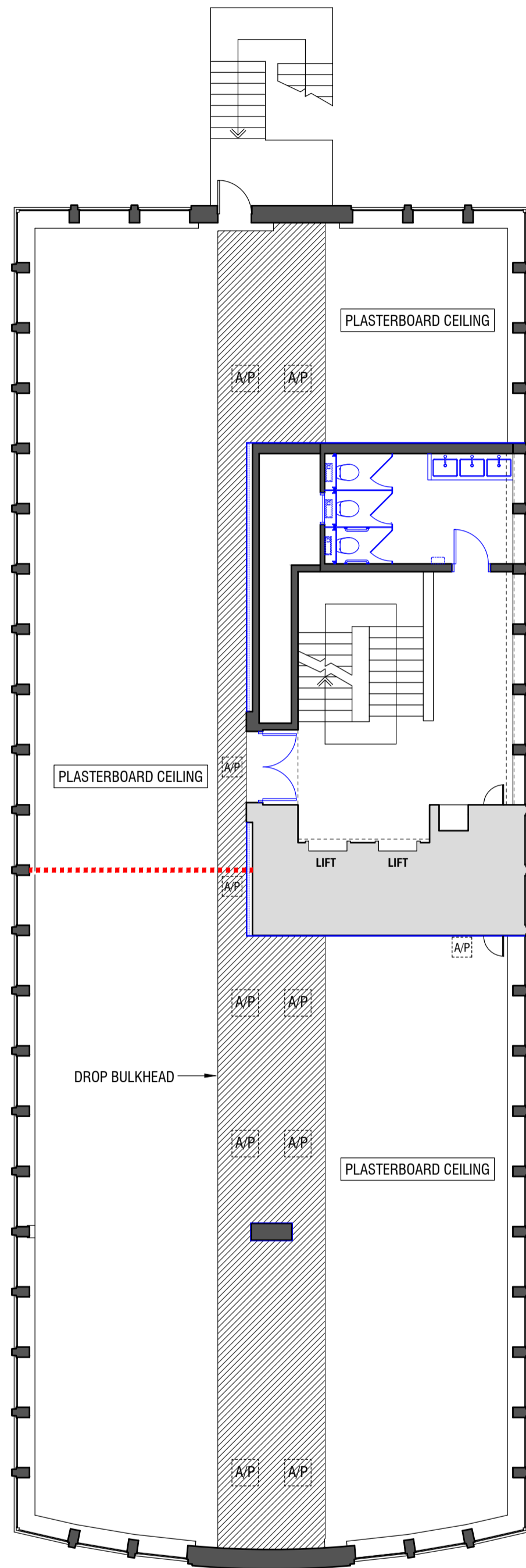


General Layout

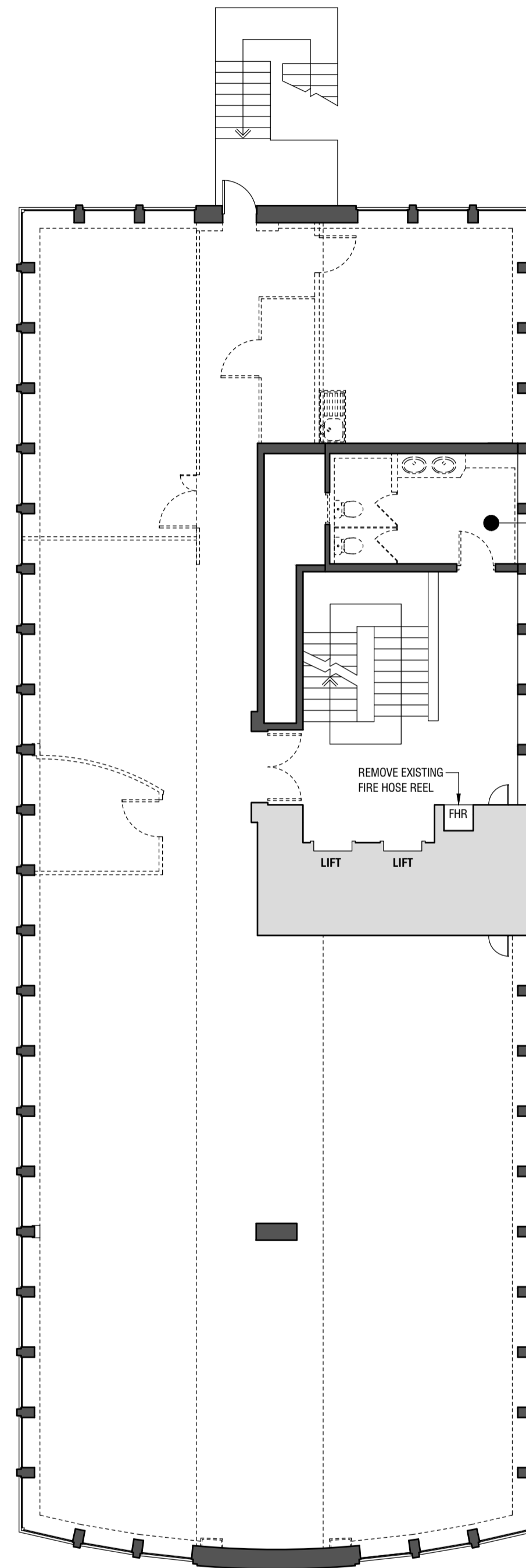
FOR DETAILS OF REFURBISHED TOILETS
SEE DRAWING MA0751-6810-606

NEW PERIMETER CASINGS WITH INTEGRATED FLUSH
MOUNTED 3 COMPARTMENT SKIRTING TRUNKING



Ceiling Layout

NOTE:
EXISTING SUSPENDED CEILING AND ALL ASSOCIATED
COMPONENTS STRIPPED OUT THROUGHOUT.
STRIPPED OUT EXISTING PERIMETER CASINGS



Demo Layout

FOR DETAILS OF REFURBISHED TOILETS
SEE DRAWING MA0751-6810-606

REMOVE EXISTING
FIRE HOSE REEL

This drawing is protected under Copyright and at no time may any portion of this drawing be reproduced or copied in anyway without the permission of Morgan Lovell.
All dimensions must be checked on site and NOT scaled from this drawing.

LEGEND

- NEW STUD PARTITION WITH ROCK WOOL INFILL
- DOUBLE SKINNED ACOUSTIC SLAB TO SLAB PARTITION
- 1/2 HOUR FIRE RATED DOOR
- VISION PANEL
- SELF CLOSING
- NEW DOOR REFERENCE
- EXISTING DOOR REFERENCE

CEILING LEGEND

- DROP PLASTERBOARD BULKHEAD
- ACCESS PANEL
- FIRE BARRIER

DEMO LEGEND

- EXISTING PARTITION TO BE REMOVED

Rev	Revision	By	Date
C	RECORD DRAWING.	SB	03.04.14
B	9th FLOOR OMITTED (NO WORKS). CEILING & DEMO LAYOUTS ADDED TO DRAWING.	SB	18.12.13
A	ISSUED FOR CONSTRUCTION.	SB	19.11.13

RECORD DRAWING

Morgan Lovell
Inspiring office transformation

Ascot House Finchampstead Road Wokingham Berks RG40 2NW
T: 0118 989 5300 F: 0118 989 5301 E: contact@morganlovell.com
W: http://www.morganlovell.com

Client
THREADNEEDLE PROPERTY INVESTMENTS

Project
CP HOUSE
97-107 UXBRIDGE ROAD
EALING
W5 5TL

Title
**TENTH FLOOR PLAN
GENERAL LAYOUT**

Scale	Date	Designer/Drawn By	Checked By / Date
1:100@A1	02/10/12	SMKB	

Drawing Number			
Project No.	Floor	Drawing No.	Rev
MA0751	10	107	C